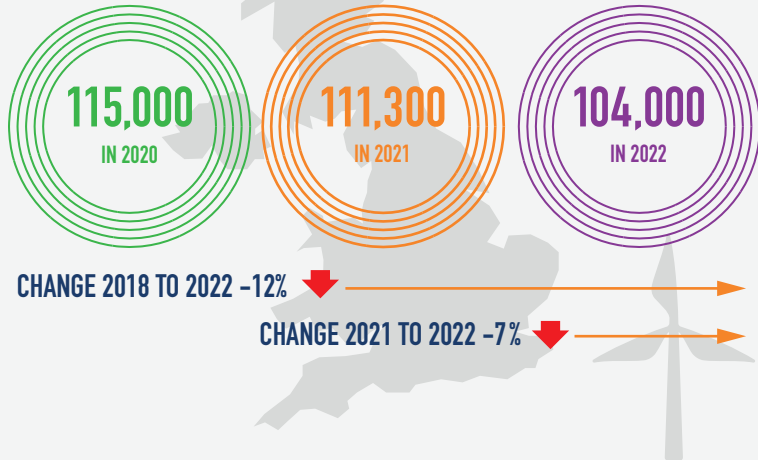


TOTAL EMPLOYMENT

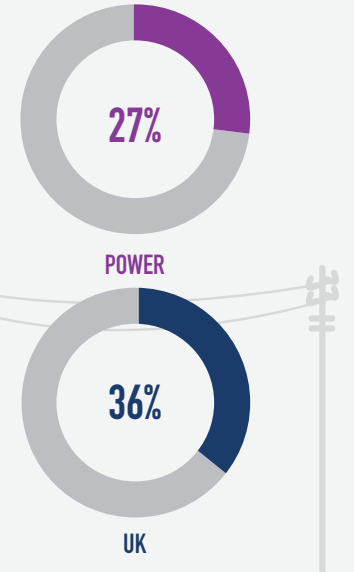
THE UK POWER INDUSTRY EMPLOYED:



IN THE FOLLOWING AREAS IN 2022:

	CHANGE 2018-2022	CHANGE 2021-2022
PRODUCTION OF ELECTRICITY 28,900	-9,000 (-24%)	-7,900 (-21%)
TRANSMISSION OF ELECTRICITY 4,400	+500 (+13%)	-100 (-2%)
DISTRIBUTION OF ELECTRICITY 52,000	(0%)	+1,100 (+2)
TRADE OF ELECTRICITY 8,300	-600 (-7%)	-400 (-5%)
CONSTRUCTION OF UTILITY PROJECTS FOR ELECTRICITY AND TELECOMMUNICATIONS 10,400	-5,000 (-32%)	(0%)

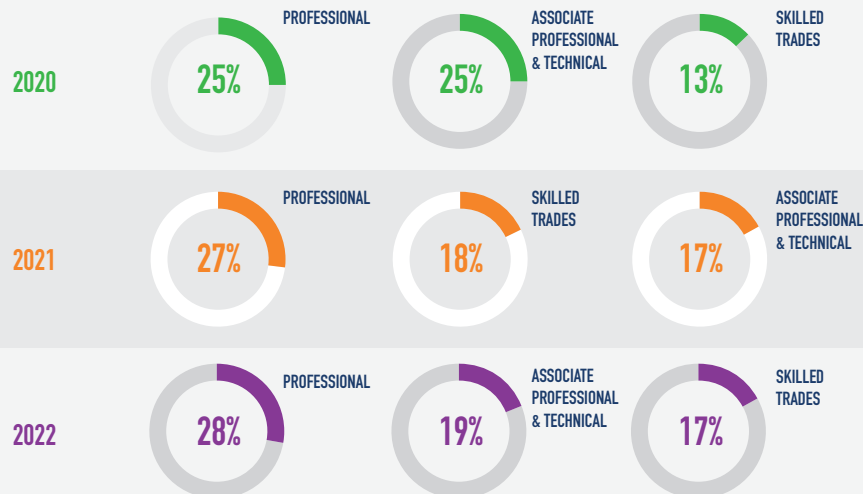
% OF VACANCIES THAT ARE SKILLS SHORTAGES 2021:



Business Register and Employment Survey, 2022 (ONS & NISRA)

UK Employer Skills Survey, Department for Education

TOP THREE OCCUPATIONAL GROUPS



Energy & Utility Skills' estimate based on Labour Force Survey (ONS) 4-quarter average (January-December 2022)

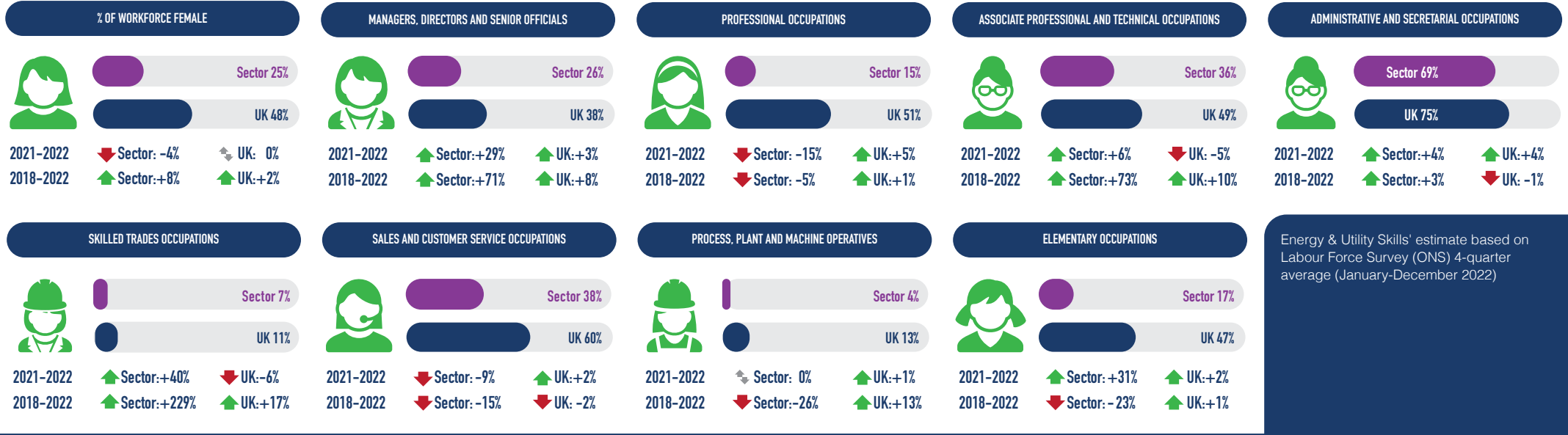
FORECAST NUMBER OF NEW PEOPLE NEEDED IN THE WORKFORCE BY 2030*

* Due to rounding, the total may not equal the sum of all occupations

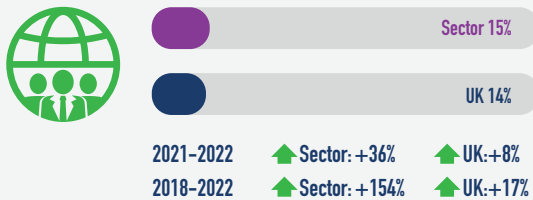


Workforce demand estimates - 2024 to 2030, Energy & Utility Skills, 2024.

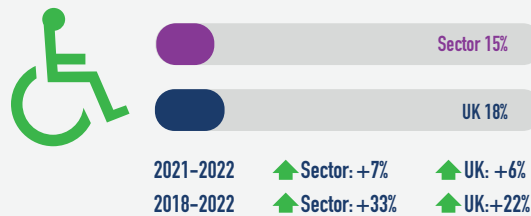
PERCENTAGE OF POWER INDUSTRY WORKFORCE - FEMALE



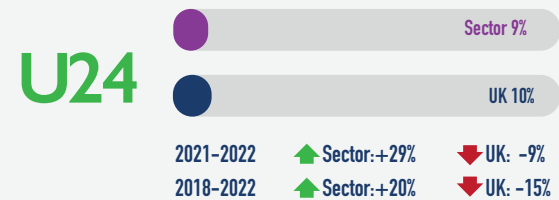
PERCENTAGE OF POWER WORKFORCE - ETHNIC MINORITY



PERCENTAGE OF POWER WORKFORCE - DISABLED



PERCENTAGE OF POWER WORKFORCE - AGED 16-24



PERCENTAGE OF POWER WORKFORCE - 60+



PERCENTAGE OF POWER WORKFORCE - EU NATIONALS



PERCENTAGE OF POWER WORKFORCE - NON-EU NATIONALS

